

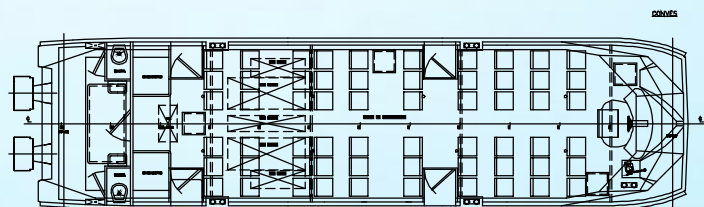
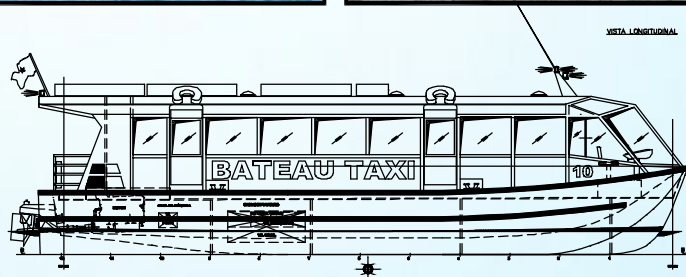
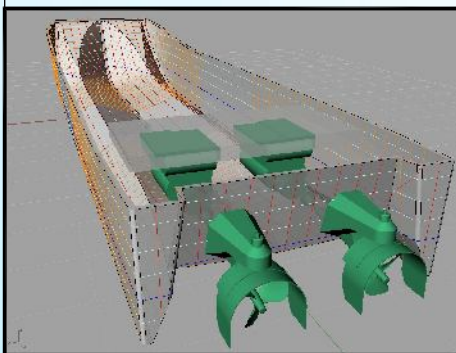
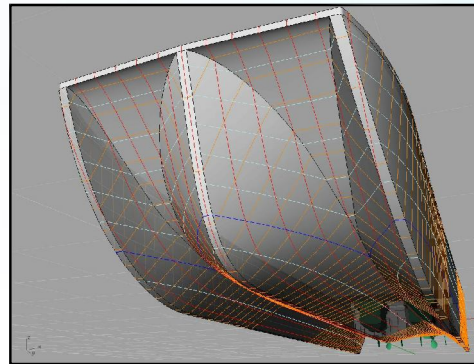
57 PAX TAXI FOR INSHORE WATERS

Construction year: 2008
 Builder: Estaleiros Navais de Peniche
 Hull material: GRP
 Superstructure material: Aluminium and GRP
 Deck material: GRP
 Main engine: 2 x Volvo D4 I - B HS, 225 HP @ 3500 rpm
 Propeller: 2 x Sea Rider T110 - LAME
 Maximum Speed: 19.5 Knots

Systems by: Estaleiros Navais de Peniche

Electronics - Furuno:

Radar
 Echo sounder
 Navnet
 GPS
 VHF
 EPIRB



CONSTRUCTION MAIN DIMENSIONS

LENGTH OVER ALL	14.32 m
BEAM	3.70 m
DRAUGHT	0.60 m
PASSENGERS	57

Estaleiros Navais de Peniche, S.A.
 Molhe Leste
 2520.620 Peniche
 PORTUGAL
 tel.: (+351) - 262 780 420
 fax: (+351) - 262 783 792
 info@enp.pt www.enp.pt