

PURSE SEINER 19.00 m

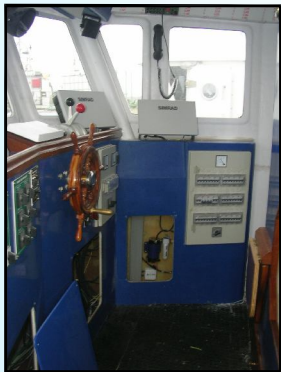
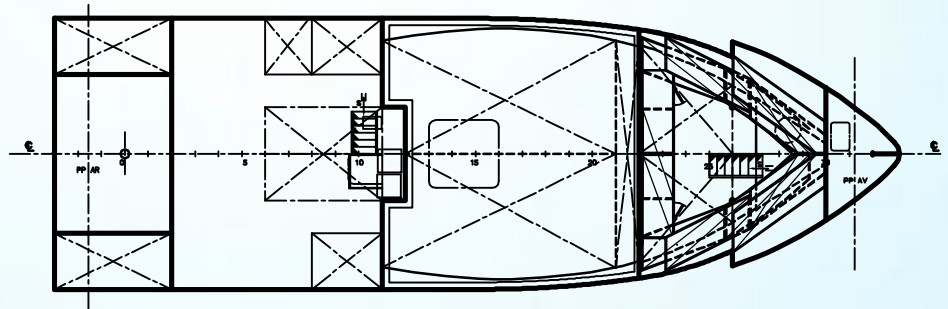
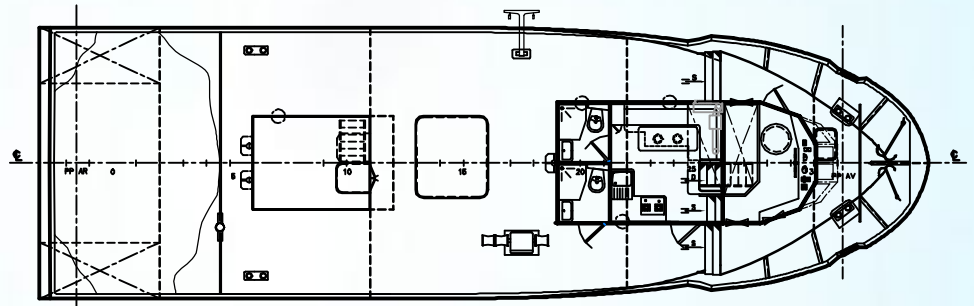
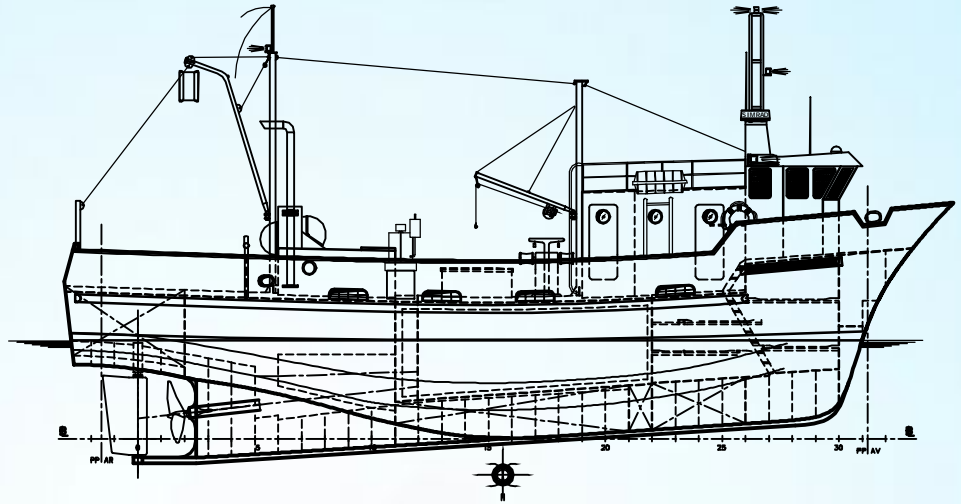
Units built: 10
 Construction year: 2006 (1st unit)
 Owner: Ministério das pescas de Angola
 Designer: Midship, Lda
 Builder: Estaleiros Navais de Peniche
 Displacement: 57 Ton
 Hull material: Steel
 Superstructure material: GRP
 Deck material: Steel
 Main engine: MTU 6DD, 450 HP @ 1800 rpm
 Auxiliary engine: Yanmar 4H2Y, 50 Kw - 100 HP
 Reduction gearbox: Twin Disc MG 5114 DC - 4.17:1
 Maximum speed: 11 Knots
 Hydraulics supplied by: Navipa
 Hydraulics installed by: ENP

Fish hold capacity: 60 m³
 Fresh water: 3.75 m³
 Fuel: 24 m³
 Crew: 12

Seining winch
 Power block
 Cargo winch (1200 Kg)
 Ice making machine

Electronics:

2 VHF Simrad RD 68
 Radar Simrad RA 42
 GPS Plotter Simrad CX 44
 GMDSS Sailor HC 4500 B
 Sonar Suzuki S 1800
 Auto pilot Simrad AP 35
 Echo sounder Simrad EQ 44



CONSTRUCTION MAIN DIMENSIONS

LENGTH OVER ALL	19.00 m
LENGTH BETWEEN PERPENDICULARS	16.40 m
BEAM	5.80 m
DEPTH	2.90 m