

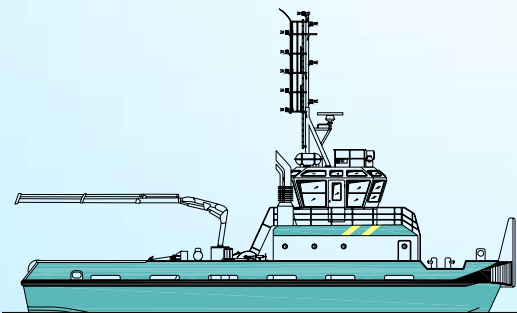
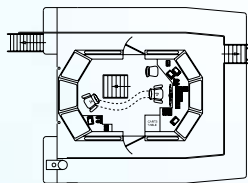
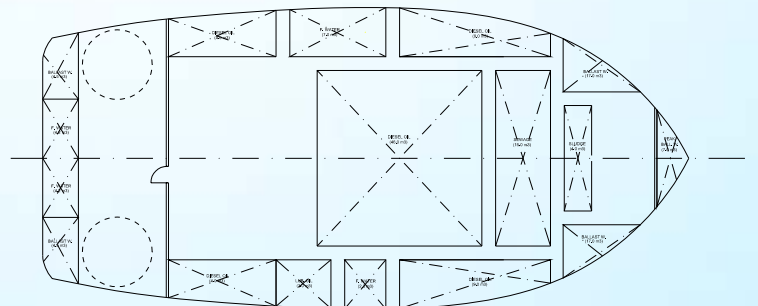
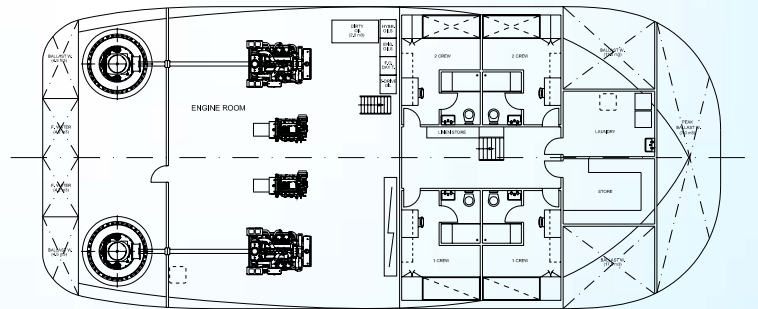
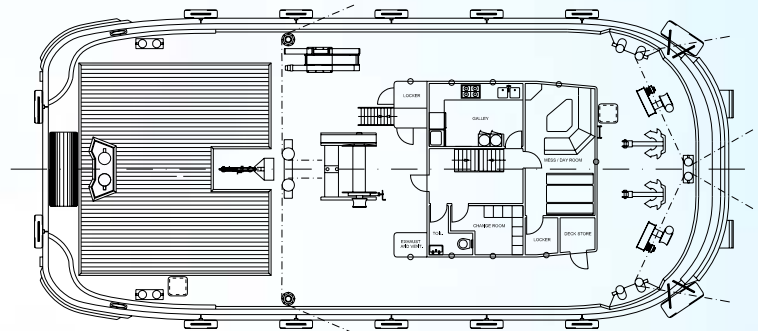
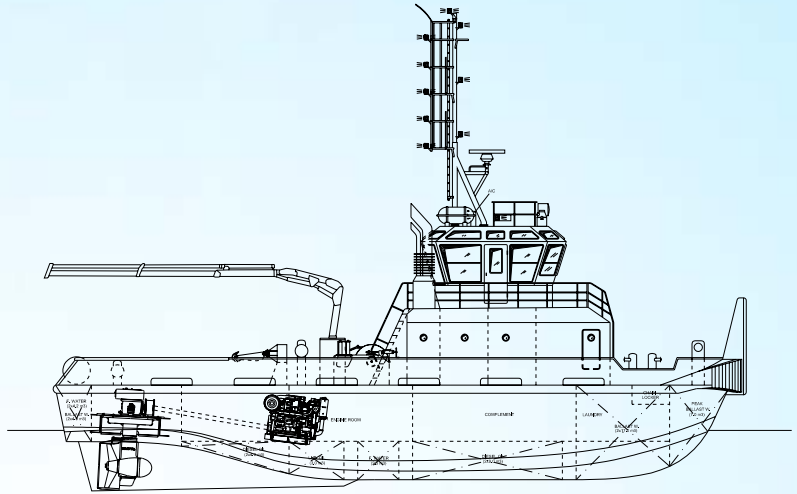
REBOCADOR 25.00 m

Projectista: Estaleiros Navais de Peniche
 Motor: 2 x Caterpillar 3508B 1100 HP @ 1800 rpm
 Propulsão: 2 x Schottel SRP 550
 Geradores: 2 x Cummins 100 KVA
 Velocidade: 11 nós
 Material de construção: Aço

Ar condicionado
 Defensas
 Grua 5 ton @ 10 m
 2 x Molinete / Guincho de reboque de proa
 Guincho de reboque de popa
 2 Cabrestantes
 Gato de reboque

Electrónicos:

Radar Furuno FR-7062 72 MN
 Sonda Furuno FE-700
 GPS Navigator GP-90
 Piloto automático C. Plath Navipilot V/GM
 Gyrocompass C.Platt X MK1 model 10
 MF / HF SKANTI TRP-1150 (GMDSS)
 1 VHF GMDSS Skanti 1000 P DSC classe D
 1 VHF GMDSS Skanti 1000 P
 Talkback Zenitel ETB-10
 EPIRB Jotron 40S / FB4
 SART Jotron
 Navtex ICS Nav-5
 2 VHF portáteis GMDSS Jotron tron-20



ANTE-PROJECTO DIMENSÕES PRINCIPAIS

COMPRIMENTO FORA A FORA	25.00 m
COMPRIMENTO ENTRE PERPRNDICULARES (CE)	23.29 m
BOCA	11.00 m
PONTAL	3.45 m
IMERSÃO DE PROJECTO	2.20 m
TRIPULAÇÃO	6

Estaleiros Navais de Peniche, S.A.
 Molhe Leste
 2520.620 Peniche
 PORTUGAL
 tel.: (+351) - 262 780 420
 fax: (+351) - 262 783 792
 Info@enp.pt www.enp.pt