



## GENERAL

PROJECT: NIGEL GEE & ASS  
HULL MATERIAL: GRP  
SUPERSTRUCTURE: GRP  
VESSEL TYPE: Passengers  
BUILDING YEAR: 2007

## DIMENSIONS

LENGTH O.A.: 18,50m  
LENGH BPP: 16,30m  
BEAM: 5,70m  
DEPTH: 2,30m  
DWL: 0,94m

## PROPULSION

MAIN ENGINE: 2xCaterpillar C18, 715HP@2100rpm  
GEAR BOX: 2 x Twindisc MG 5135 SC 1.28:1  
WATERJET: 2x Doen DJ 170 HP

## SPEED

SPEED: 19.9 knots

## TANKS

FUEL: 3030L

## ENERGY

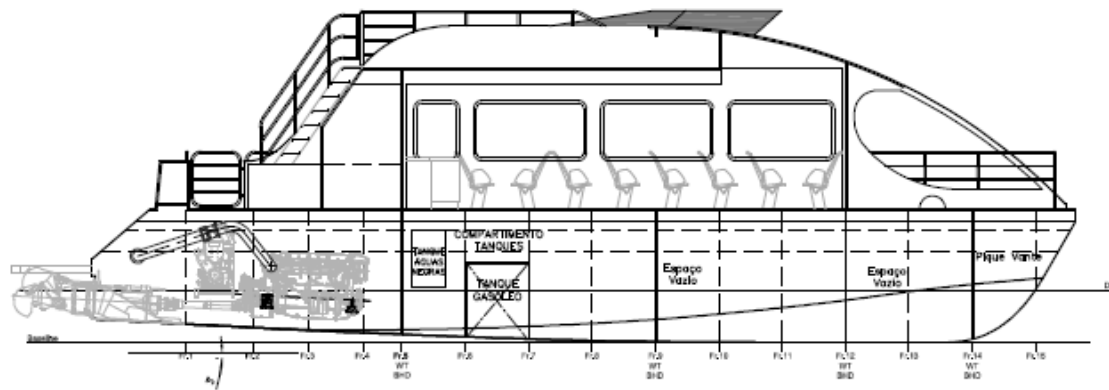
GEN SET: 2x Iveco Neptuno 40KVA  
NETWORK: 400V/ 230V AC, 3 phase, 50Hz 24V

## ACCOMODATION

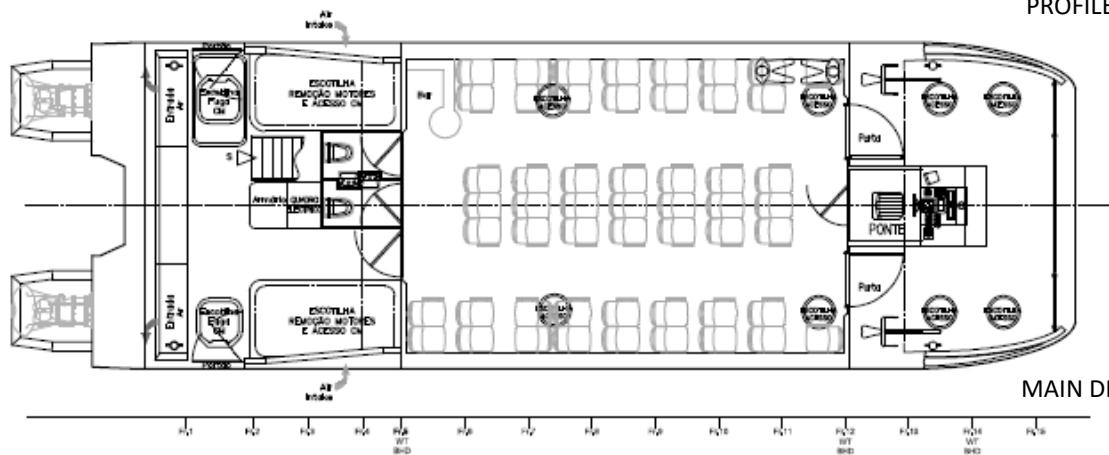
CREW: 2  
PASSENGERS: 70

## NAUTICAL AND COMMUNICATION

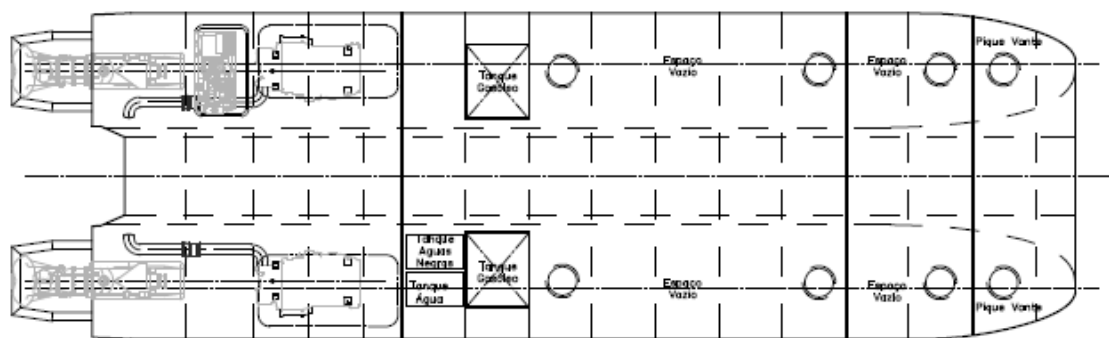
RADAR: Furuno 1715, 24 NM, 2,2 Kw  
COMPASS: Silva 100 NBC  
GPS CHART PLOTTER: Furuno GP 1650  
ECHO SOUNDER: Furuno FCV 600L 50/200 KHz  
RADIO VHF: Sailor RT62  
INTERCOMMUNICATION SYSTEM



PROFILE



MAIN DECK



BELLOW DECK

Layout and equipment indicative.

Please contact [info@enp.pt](mailto:info@enp.pt) for more details.



**Estaleiros Navais de Peniche S.A.**

Molhe Leste  
2520-620 Peniche

Tel: +351 262 780 420

[www.enp.pt](http://www.enp.pt)

Portugal

[info@enp.pt](mailto:info@enp.pt)

39.353282, -9.36773