



GENERAL

PROJECT: SPN
HULL MATERIAL: Steel
SUPERSTRUCTURE: GRP
VESSEL TYPE: FerryBoat
BUILDING YEAR: 2004

DIMENSIONS

LENGTH O.A.: 32,00m
LENGH BPP: 30,00m
BEAM: 8,00m
DEPTH: 2,50m

PROPULSION

MAIN ENGINE: 2xGuascor V-drive, 1180HP@1800rpm
GEAR BOX: 2x ZF 4540 V ratio 2.5:1
PROPULSION: Fundibronze

SPEED

SPEED: 17.0 knots

TANKS

FUEL: 30.000L
FRESH WATER: 8.000L

ENERGY

GEN SET: 2x Guascor
NETWORK: 400V/ 230V AC, 3 phase, 50Hz 24V

ACCOMODATION

CREW: 9
PASSENGERS: 94

NAUTICAL AND COMMUNICATION

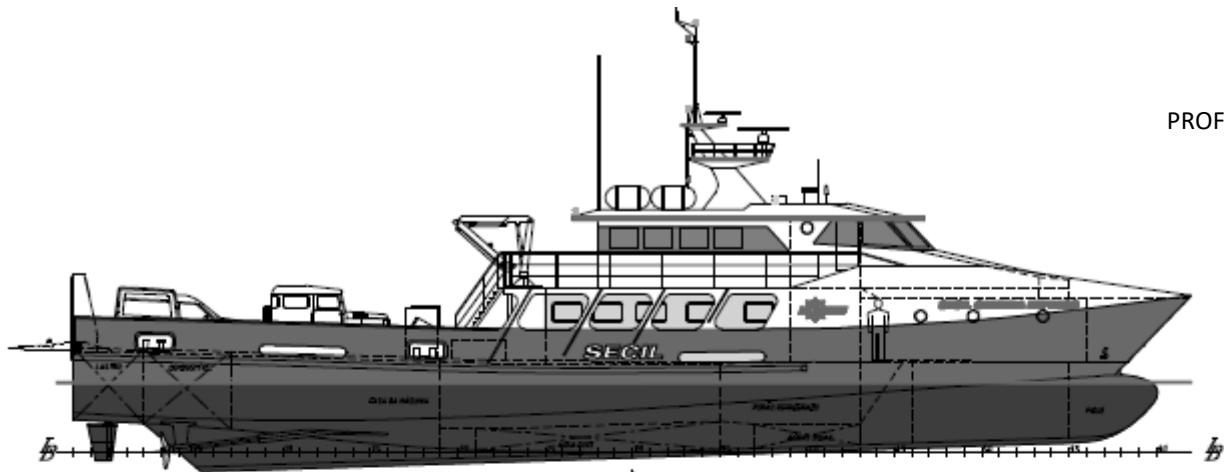
RADAR: Simrad RA 44 e JRC JMA 2343
GPS CHART PLOTTER: Simrad CP33
AUTO PILOT: Simrad AP35
ECHO SOUNDER: Hondex HE777
RADIO VHF: Sailor RT62
RADIO TELEPHONE MF/HF: SSB JSB-196
INTERCOMMUNICATION SYSTEM: ETB-5
SART: Jotron Tron SART 20

CARGO CAPACITY

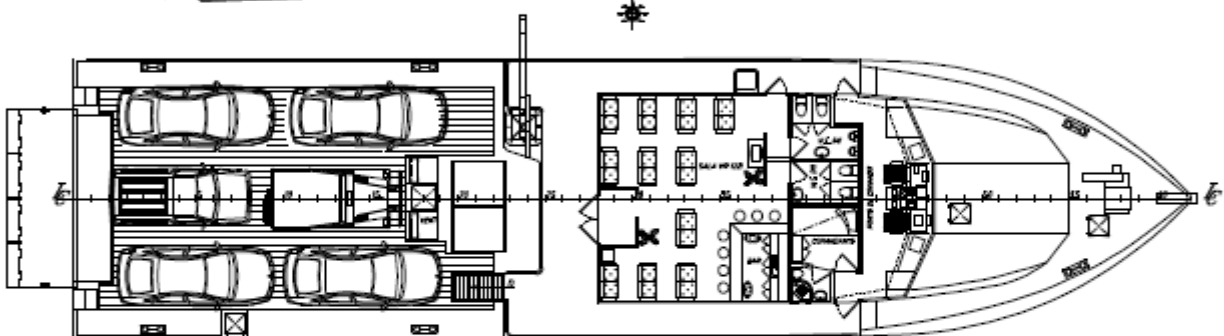
CARGO HOLD: 80m³
REFRIGERATED HOLD: 10m³
CARGO DECK: 6 Vehicles

LIFTING EQUIPMENT

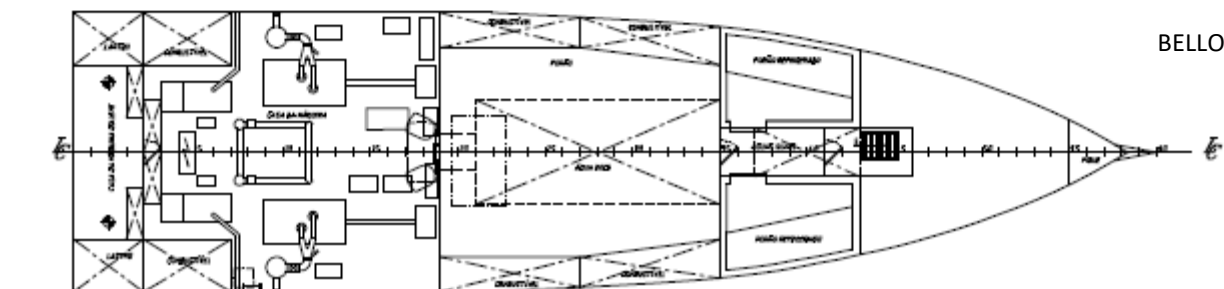
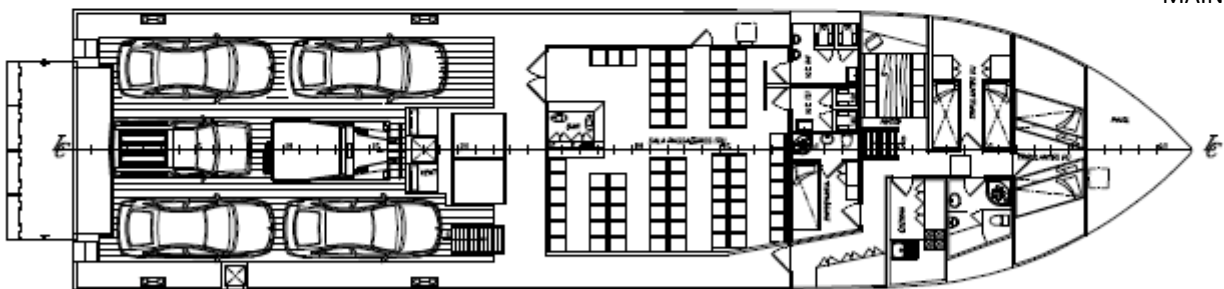
HYDRAULIC CRANE: Guerra 60.90M 4.2Ton
HYDRAULIC WINCH: 600 kg @7.00 m



PROFILE



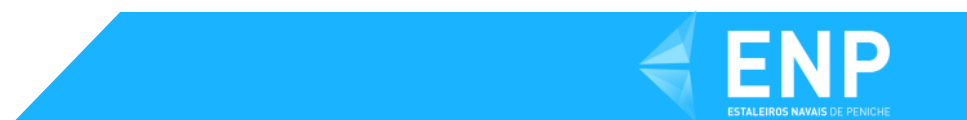
MAIN DECK



BELLOW DECK

Layout and equipment indicative.

Please contact info@enp.pt for more details.



Estaleiros Navais de Peniche S.A.

Molhe Leste
2520-620 Peniche

Tel: +351 262 780 420

www.enp.pt

Portugal

info@enp.pt

39.353282, -9.36773