



## GENERAL

PROJECT: H. P.  
HULL MATERIAL: Steel  
SUPERSTRUCTURE: Composite  
VESSEL TYPE: LONG LINER  
BUILDING YEAR: 2006

## DIMENSIONS

LENGTH O.A.: 24.79m  
LENGH BPP: 20.00 m  
BEAM: 6.4m  
DEPTH: 5.3m  
DWL: 2.7m

## PROPULSION

MAIN ENGINE: MAN D 2842 LE403, 500 HP @ 1800 rpm  
GEAR BOX: ZF W3300 4:1  
SHAFT AND PROPELLER: Fundibronze

## SPEED

SPEED: 11 Knots

## TANK CAPACITIES

FUEL: 35m<sup>3</sup>  
FRESH WATER: 6.2m<sup>3</sup>  
BILGE/ SLUDGE (LUBRICATION): 1.15m<sup>3</sup>  
BILGE/ SLUDGE (HYDRAULIC): 1.96m<sup>3</sup>

## ENERGY

GEN SET: 2 x 120 KVA  
NETWORK: 400V/ 230V AC, 3 phase, 50Hz 24V DC

## ACCOMODATION

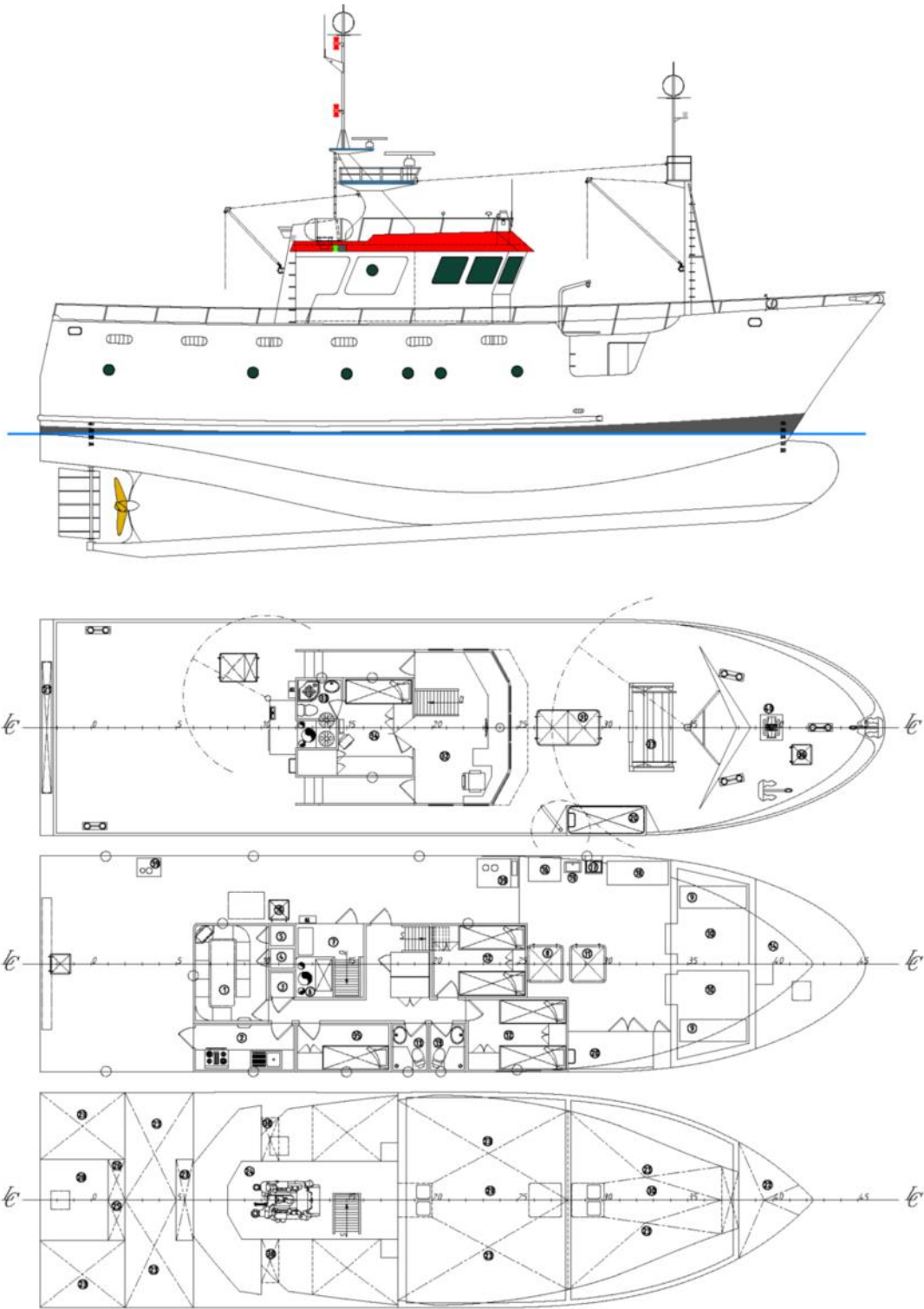
CREW: 12

## NAUTICAL AND COMMUNICATION

RADAR: 1954C-BB  
ECHO SOUNDER: ETR-30N  
AUTO PILOT: COMNAV 1201  
GYRO COMPASS: FURUNO SC-50  
RADIO TELEPHONE VHF: VHF SAILOR RT 2047; VHF M-2721 DSC D Class  
RADIO TELEPHONE : ICOM IC-M710  
SATELITE: THRANE & THRANE TT-3064A  
PLOTTER: SEAWAVE SEIWA  
FACSIMILE FURUNO 208A

## CARGO

FISH HOLD AFT: 23 ton  
FISH HOLD FORWARD: 22 ton  
FISH TUNNEL (FROZEN): 5 ton



Layout and equipment indicative.

Please contact [info@enp.pt](mailto:info@enp.pt) for more details.



**Estaleiros Navais de Peniche S.A.**

Molhe Leste  
2520-620 Peniche

Tel: +351 262 780 420

[www.enp.pt](http://www.enp.pt)

Portugal

[info@enp.pt](mailto:info@enp.pt)

39.353282, -9.36773