



GENERAL

PROJECT: CARMAC DESIGN
HULL MATERIAL: GRP
SUPERSTRUCTURE: GRP
VESSEL TYPE: Passengers Boat
BUILDING YEAR: 2008
TYPE APPROVAL: DNV

DIMENSIONS

LENGTH O.A.: 11.79m
LENGH BPP: 11.28m
BEAM: 4.15m
DEPTH: 1.75m

PROPULSION

MAIN ENGINE: 2x Volvo Penta D9, 425HP@2200rpm
GEAR BOX: 2x ZF 325IV 1,485:1
PROPULSION: 2x FundiBronze

SPEED

SPEED: 23 knots

TANKS

FUEL: 600L
FRESH WATER: 100L

ENERGY

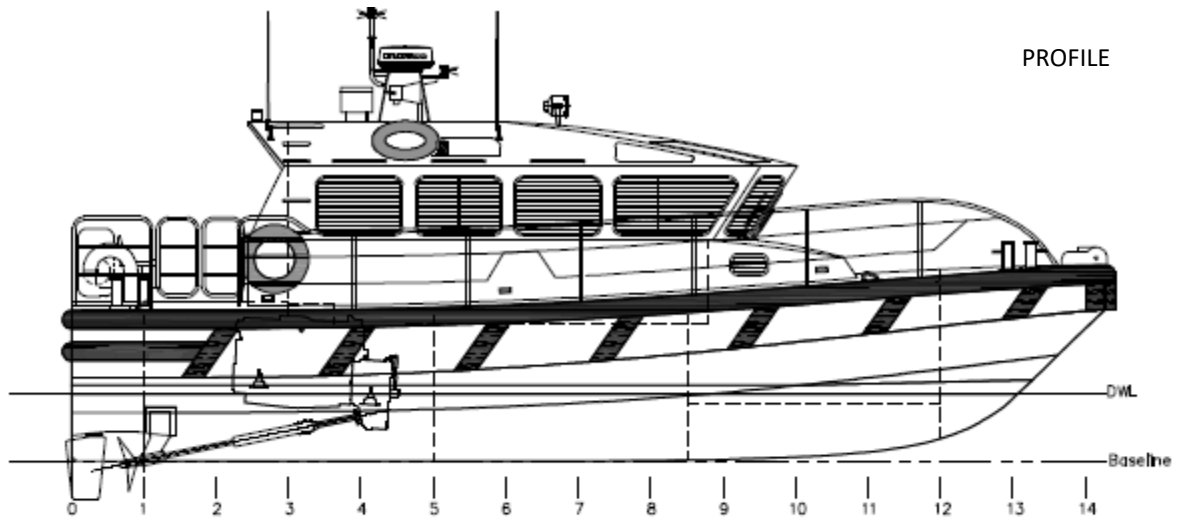
NETWORK: 24V DC

ACCOMODATION

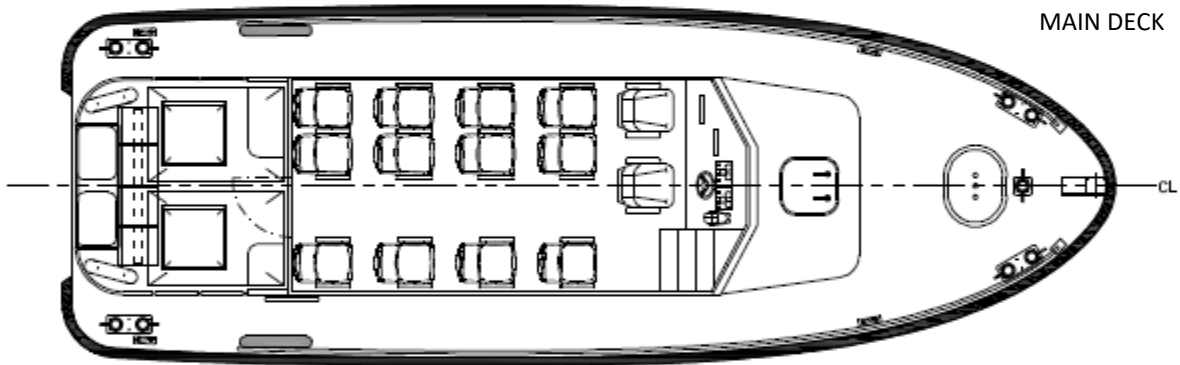
CREW: 2
PASSENGERS: 12

NAUTICAL AND COMMUNICATION

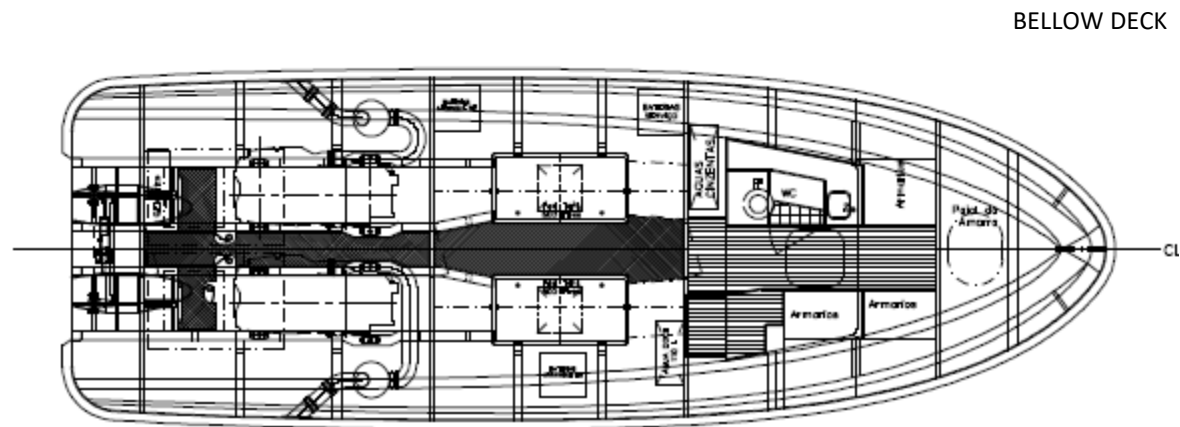
RADAR/ CHART PLOTTER: Furuno Navnet VX2 1834C
ECHO SOUNDER: Furuno
GPS: Furuno GP 150
RUDDER INDICATOR: vdo
MAGNETIC COMPASS: imnasa
RADIO VHF: 2x VHF DSC A1 Sailor
EPIRB: Jotron Tron 40SMK2/FB-6
ANEMOMETER: Furuno FI-50



PROFILE



MAIN DECK



BELLOW DECK

Layout and equipment indicative.

Please contact info@enp.pt for more details.



Estaleiros Navais de Peniche S.A.

Molhe Leste
2520-620 Peniche

Tel: +351 262 780 420

www.enp.pt

Portugal

info@enp.pt

39.353282, -9.36773