



GENERAL

PROJECT: ENP, S.A.
HULL MATERIAL: GRP
SUPERSTRUCTURE: : GRP
VESSEL TYPE: Purse Seiner

DIMENSIONS

LENGTH O.A.: 33,6m
LENGH BPP: 23,81m
BEAM: 8,40m
DEPTH: 4,20m

PROPULSION

MAIN ENGINE: Guascor, SF360TA2-SP 1200HP@2000rpm
GEAR BOX: Guascor R500H 4:1

SPEED

SPEED: 10 knots

TANKS

FUEL: 29,15m³
FRESH WATER: 8,73 m³

ENERGY

GEN SET: John Deere de 390kVA
NETWORK: 400V/ 230V AC, 3 phase, 50Hz 24V

ACCOMODATION

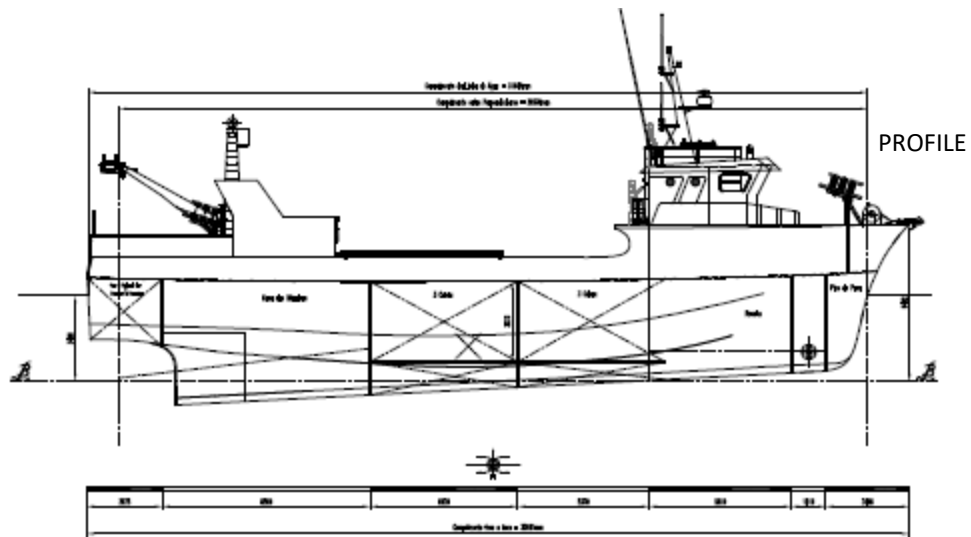
CREW: 19

NAUTICAL AND COMMUNICATION

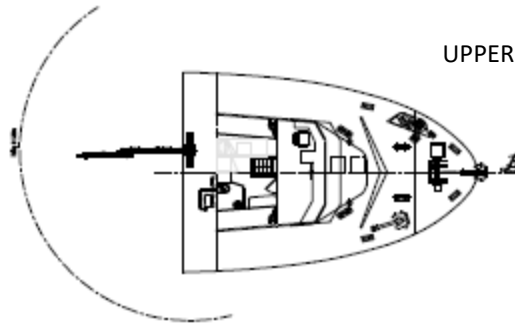
RADAR: JRC JMA-3340-6
GPS/ CHART PLOTTER: ONWA KP-1299
SONAR: JRC JFP-180BB
ECHO SOUNDER: HONDEX HE775Di
AUTO PILOT: HUMMINBIRD SC110
RADIO VHF: 2x VHF Class D. SAILOR6215
RADIO TELEPHONE MF/HF: JRC JSS-2150
RUDDER INDICATOR ONWA KRI-80
INTERCOMMUNICATION SYSTEM: ZENITEL ETB 5
EPIRB: GME MT403FG

CARGO CAPACITY

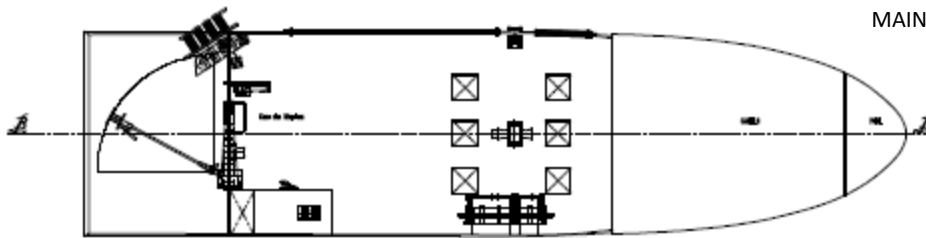
FISH REFRIGERATION SYSTEM: RSW
FISH HOLD: 150tons , 217m³



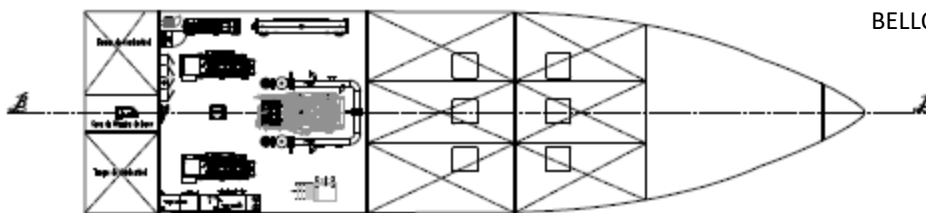
PROFILE



UPPER DECK



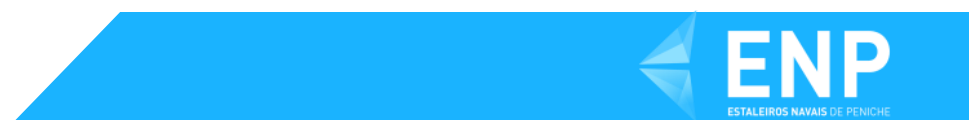
MAIN DECK



BELLOW DECK

Layout and equipment indicative.

Please contact info@enp.pt for more details.



Estaleiros Navais de Peniche S.A.

Molhe Leste
2520-620 Peniche

Tel: +351 262 780 420

www.enp.pt

Portugal

info@enp.pt

39.353282, -9.36773