



GENERAL

PROJECT: Bludworth Marine/ ENP
STRUCTURE MATERIAL: Steel
BUILDING YEAR: 2012
CLASS NOTATION: RINA

DIMENSIONS

LENGTH O.A.: 62,00m
BEAM: 26,00m
DEPTH TO WORK DECK: 3,00m
DEPTH TO WING DECK: 10,2m
CLEAR WIDTH DOCK: 21,00m
DRAUGHT OVER BLOCKS : 3,00m

LIFTING CAPACITY

1500 Tons

SPECIFIC EQUIPMENT

HYDRAULIC CRANE: IT Cranes 30-2,5; IT Cranes 38-2,5
COMPRESSORS: 2x Atlas Copco GA 37

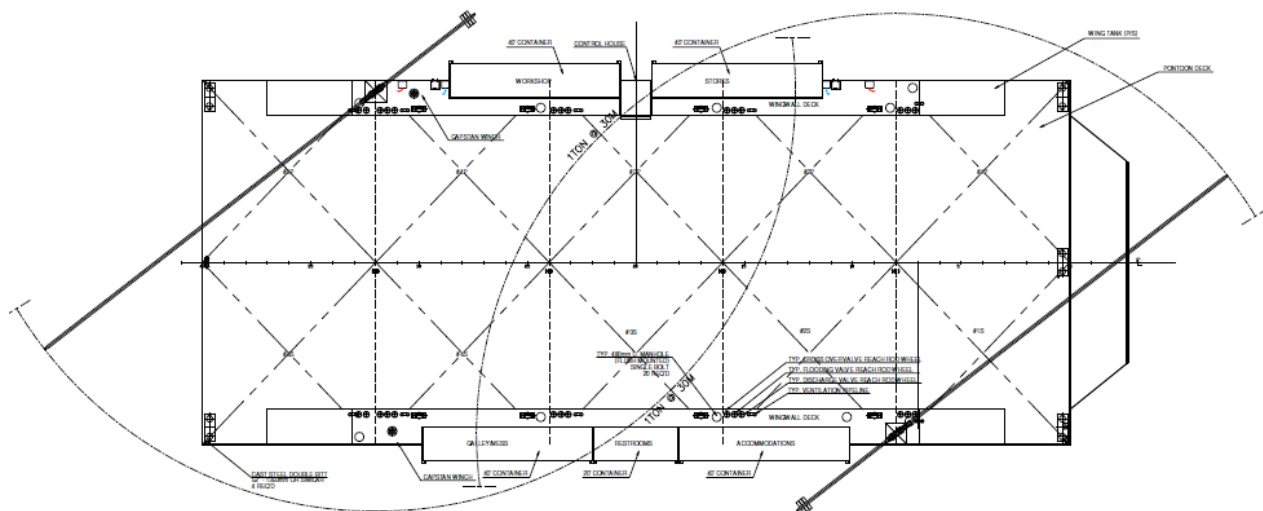
ENERGY

GEN SET: 2x Grupo Iveco Marelli 350KVA
NETWORK: 400V/ 230V AC, 3 phase, 50Hz 24V

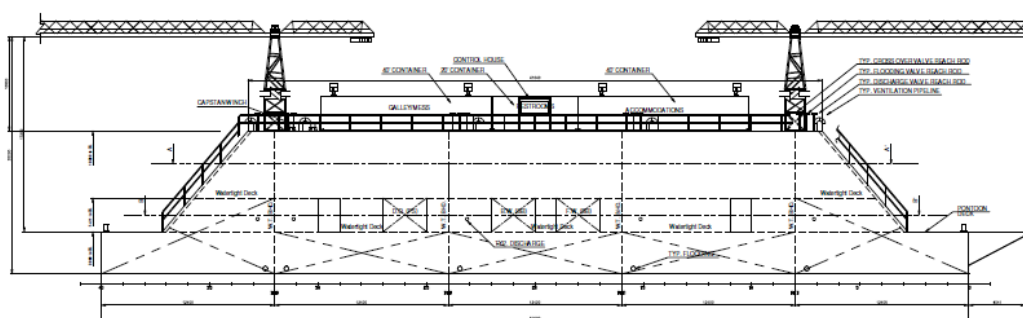
ACCOMODATION

WORKSHOP FACILITIES
SOCIAL AREA
WC's

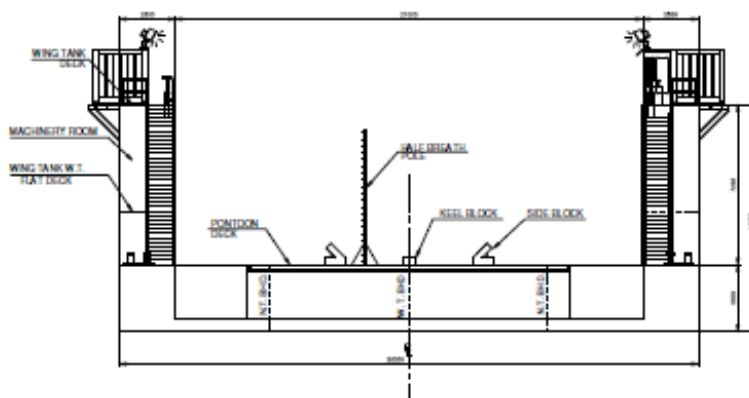
PLAN VIEW



OUTBOARD PROFILE



TRANSVERSE PROFILE



Layout and equipment indicative.

Please contact info@enp.pt for more details.



Estaleiros Navais de Peniche S.A.

Molhe Leste
2520-620 Peniche

Portugal

Tel: +351 262 780 420

info@enp.pt

www.enp.pt

39.353282, -9.36773