



## GENERAL

PROJECT: BRUNO COLAS/ ENP  
HULL MATERIAL: GRP  
SUPERSTRUCTURE: GRP  
VESSEL TYPE: Traditional fishing vessel/Pirogue  
BUILDING YEAR: 2009

## DIMENSIONS

LENGTH O.A.: 11.75m  
BEAM: 2.15m  
DEPTH: 0.87m

## PROPULSION

MAIN ENGINE: Volvo D2-40, 40HP@3200 rpm  
GEAR BOX: ZF 15 M; 1.556:1  
PROPULSION: FundiBronze

## SPEED

SPEED: 12.0 knots

## TANKS

FUEL: 225L

## ENERGY

NETWORK: 50Hz 24V DC

## ACCOMODATION

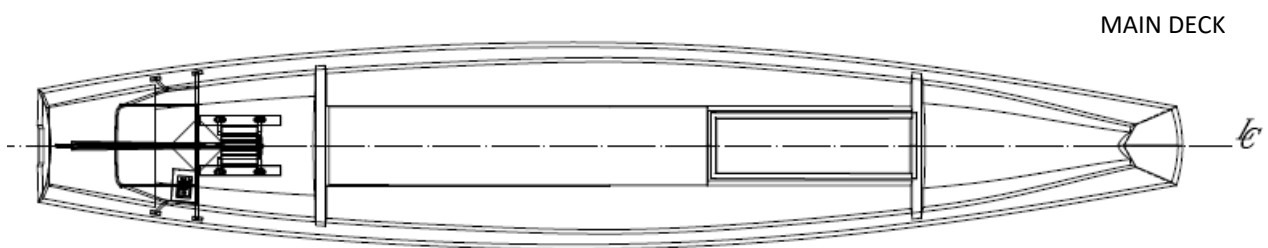
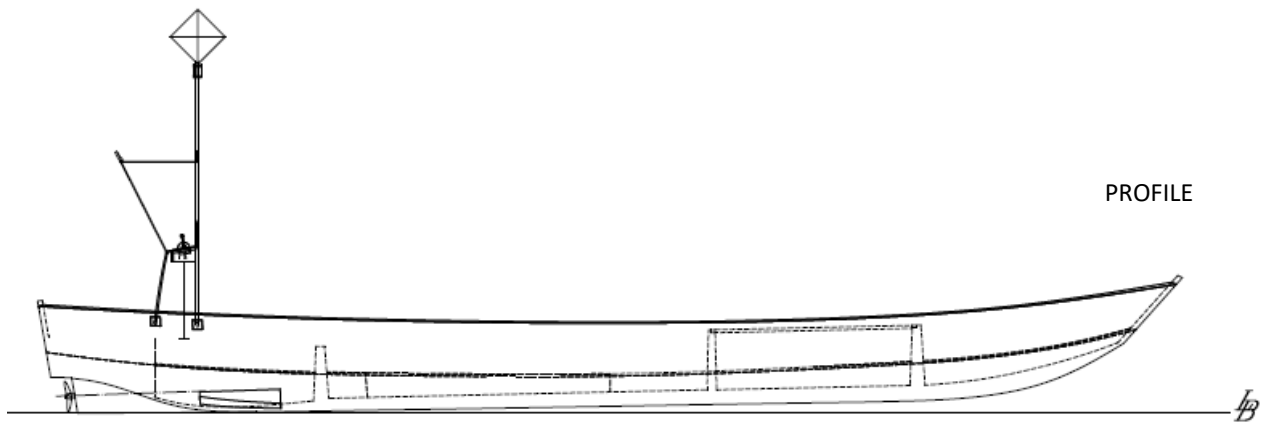
CREW: 3

## NAUTICAL AND COMMUNICATION

GPS: Garmin MAP 60CX  
ECHO SOUNDER: Fishfinder Garmin 400C  
RADIO VHF  
RADAR REFLECTOR  
MAGNETIC COMPASS

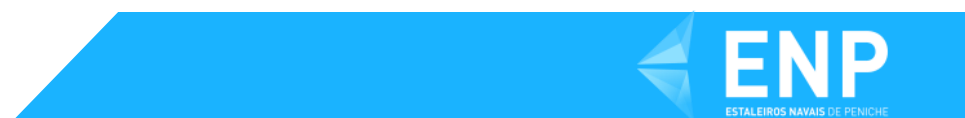
## CARGO CAPACITY

FISH HOLD: 1000Kg



Layout and equipment indicative.

Please contact [info@enp.pt](mailto:info@enp.pt) for more details.



**Estaleiros Navais de Peniche S.A.**

Molhe Leste  
2520-620 Peniche

Tel: +351 262 780 420

[www.enp.pt](http://www.enp.pt)

Portugal

[info@enp.pt](mailto:info@enp.pt)

39.353282, -9.36773