



GENERAL

PROJECT: CONAFI
HULL MATERIAL: GRP
SUPERSTRUCTURE: GRP
VESSEL TYPE: Polyvalent Fishing
BUILDING YEAR: 2002

DIMENSIONS

LENGTH O.A.: 13.75m
LENGH BPP: 10.73m
BEAM: 4.10m
DEPTH: 2.00m

PROPULSION

MAIN ENGINE: John Deere 6068 AFM75, 230HP@2300 rpm
GEAR BOX: Twin Disc
SHAFT AND PROPELLER: FundiBronze

SPEED

SPEED: 9,50 knots

TANK CAPACITIES

FUEL: 4200L
FRESH WATER: 1000L

ENERGY

NETWORK: 24V DC

ACCOMODATION

CREW: 5

NAUTICAL AND COMMUNICATION

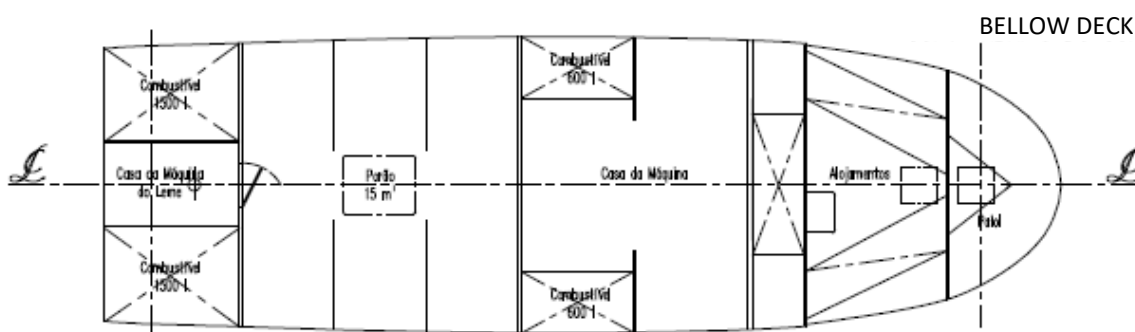
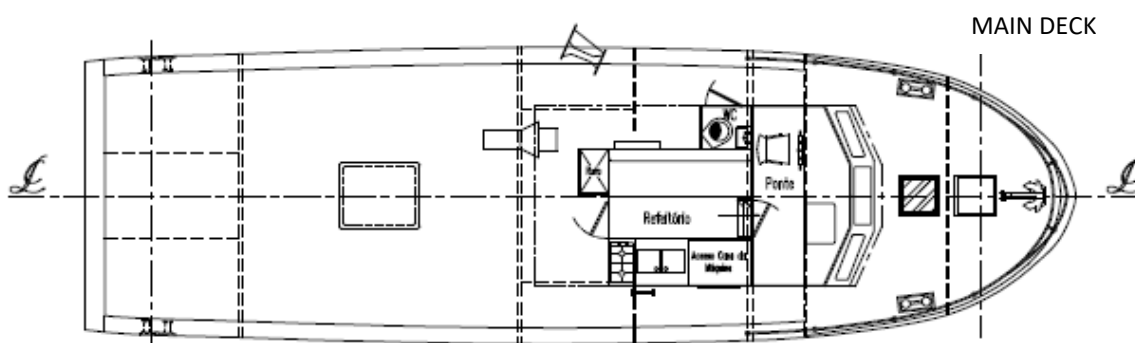
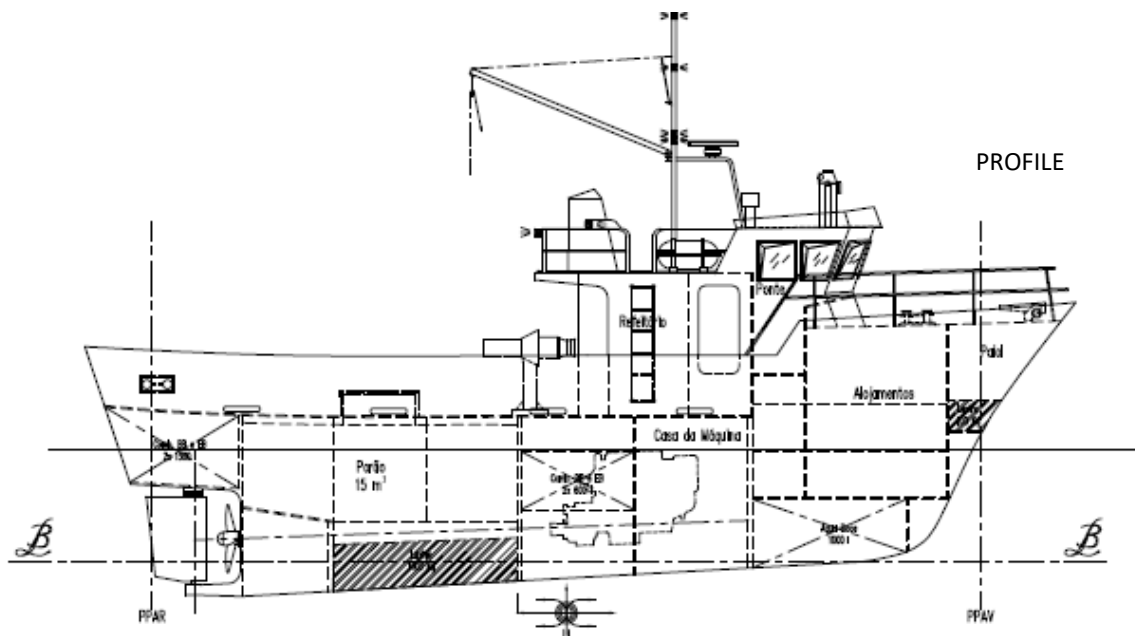
RADAR: Furuno 1715 2.2KW 24nm
ECHO SOUNDER: Furuno FCV 627 + Transdutor Furuno
520 5MSD
GPS PLOTTER: FURUNO 1670 W
AUTO PILOT: Furuno Navpilot 700
SONAR: CH-250
RUDDER INDICATOR: Furuno FI-506
RADIO VHF: SAILOR
EPIRB: Jotron Tron 60S

CARGO

FISH HOLD: 15m³

FISHING EQUIPMENT

HYDRAULIC POLYVALENT WINCH 1.5ton



Layout and equipment indicative.

Please contact info@enp.pt for more details.



Estaleiros Navais de Peniche S.A.

Molhe Leste
2520-620 Peniche

Tel: +351 262 780 420

www.enp.pt

Portugal

info@enp.pt

39.353282, -9.36773