



## GENERAL

PROJECT: EUROSHIDE/ VERA NAVIS  
HULL MATERIAL: Steel  
SUPERSTRUCTURE: Steel  
VESSEL TYPE: Polyvalent vessel  
BUILDING YEAR: 2011

## DIMENSIONS

LENGTH O.A.: 29,80m  
LENGH BPP: 29,19m  
BEAM: 8,00m  
DEPTH: 3,50m

## PROPULSION

MAIN ENGINE: 2xCaterpillar C18, 454HP@1800rpm  
GEAR BOX: 2x TwinDisc MG-5114 DC ratio 3.28:1  
SHAFT AND PROPELLER: Fundibronze

## SPEED

SPEED: 9 knots

## TANK CAPACITIES

FUEL: 35m<sup>3</sup>  
FRESH WATER: 27m<sup>3</sup>

## ENERGY

GEN SET: 2x Caterpillar C4.4, 81KVA  
EMERGENCY GEN SET: Caterpillar C4.4, 45KVA  
NETWORK: 400V/ 230V AC, 3 phase, 50Hz 24V

## ACCOMODATION

CREW: 8  
PASSENGERS: 80

## NAUTICAL AND COMMUNICATION

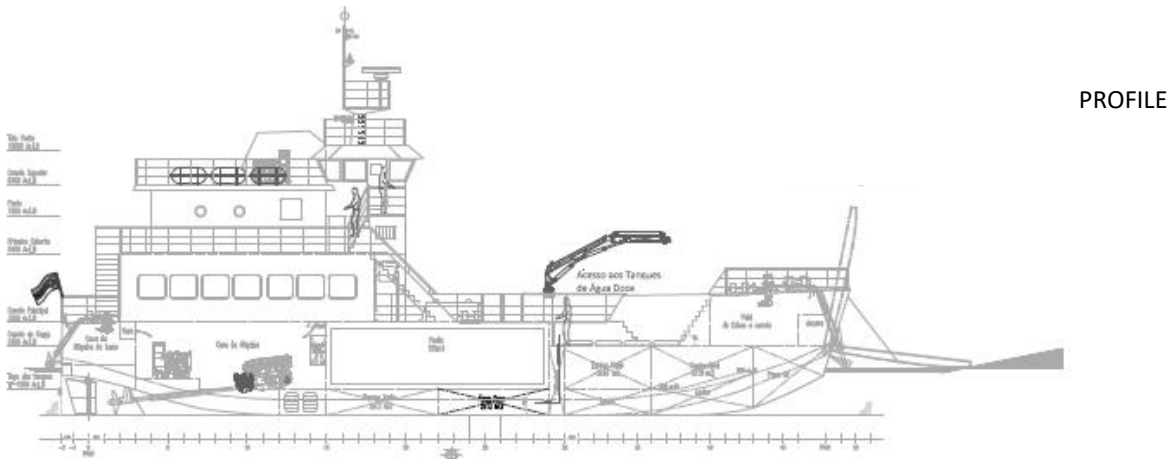
RADAR: Furuno 1945  
RADAR/ GPS/CHART PLOTTER: Furuno GP1650W  
AUTO PILOT: Furuno NavPilot 700  
AIS: Furuno FA -150  
ECHO SOUNDER: Furuno FCV 620  
RADIO VHF: VHF Furuno FM FM-8800S  
INTERCOMMUNICATION SYSTEM: Zenitel VSP 211L  
SART: Jotron Tron SART 20  
EPIRB: Jotron Tron 40S 406MHz

## CARGO CAPACITY

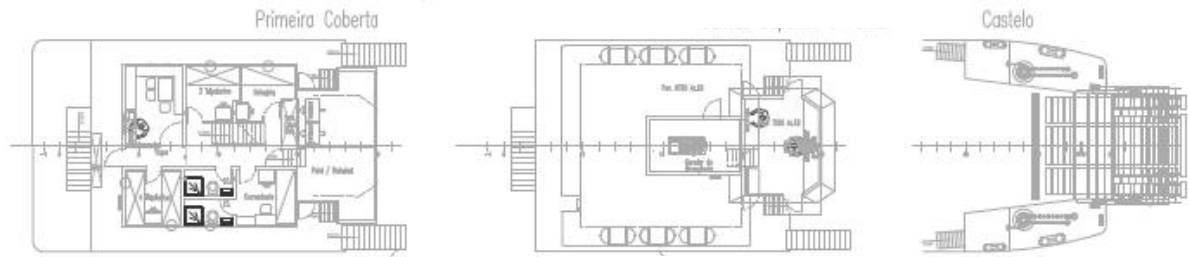
CARGO: 70Tons  
REFRIGERATED HOLD: 11m<sup>3</sup>+ 15m<sup>3</sup>  
CARGO DECK: 4 Vehicles

## LIFTING EQUIPMENT

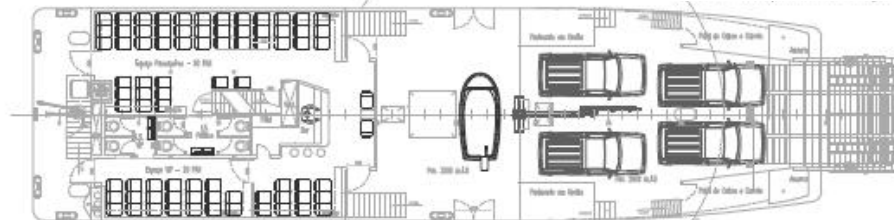
HYDRAULIC CRANE: Guerra M75.90 A2, 75.2KN.m



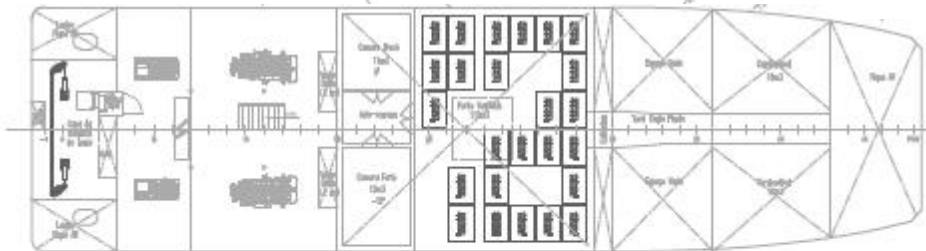
PROFILE



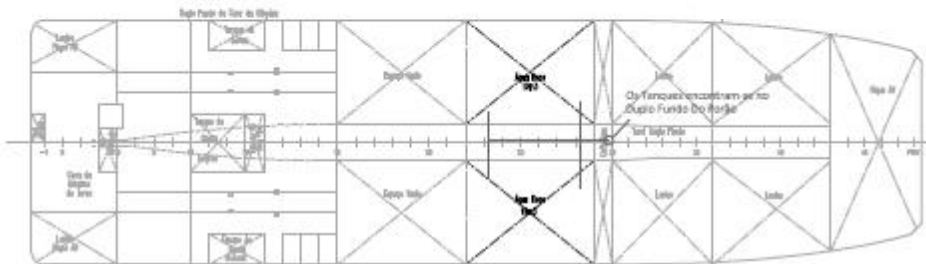
MAIN DECK



BELLOW DECK

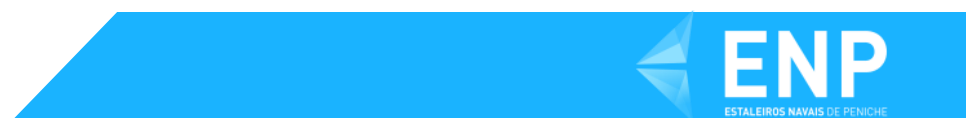


DOUBLE BOTTOM



Layout and equipment indicative.

Please contact info@enp.pt for more details.



**Estaleiros Navais de Peniche S.A.**

Molhe Leste  
2520-620 Peniche

Tel: +351 262 780 420

[www.enp.pt](http://www.enp.pt)

Portugal

[info@enp.pt](mailto:info@enp.pt)

39.353282, -9.36773