



GENERAL

PROJECT: ENP
HULL MATERIAL: GRP
VESSEL TYPE: Fishing Boat
BUILDING YEAR: 2018

DIMENSIONS

LENGTH O.A.: 5,49m
BEAM: 2,25m
DEPTH: 0,99m

PROPULSION

MAIN ENGINE: Outboard engine, Honda BF40DK4 - 40HP
SHAFT LENGHT: Ultra Long
STEERING SYSTEM: Manual

TANK CAPACITIES

FUEL: 60L
ENGINE LUB OIL: 10W40 or 15W40 ; 2,00L

ENERGY

NETWORK: 12V DC

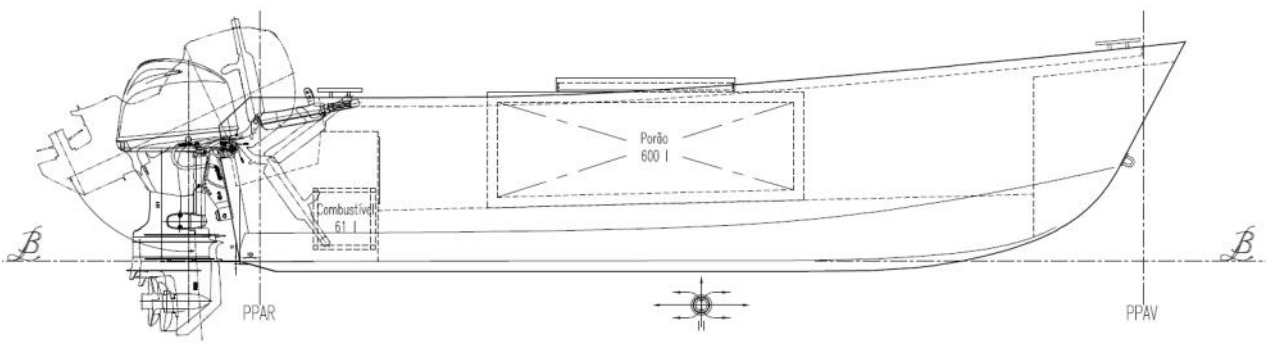
ACCOMODATION

CREW: 4

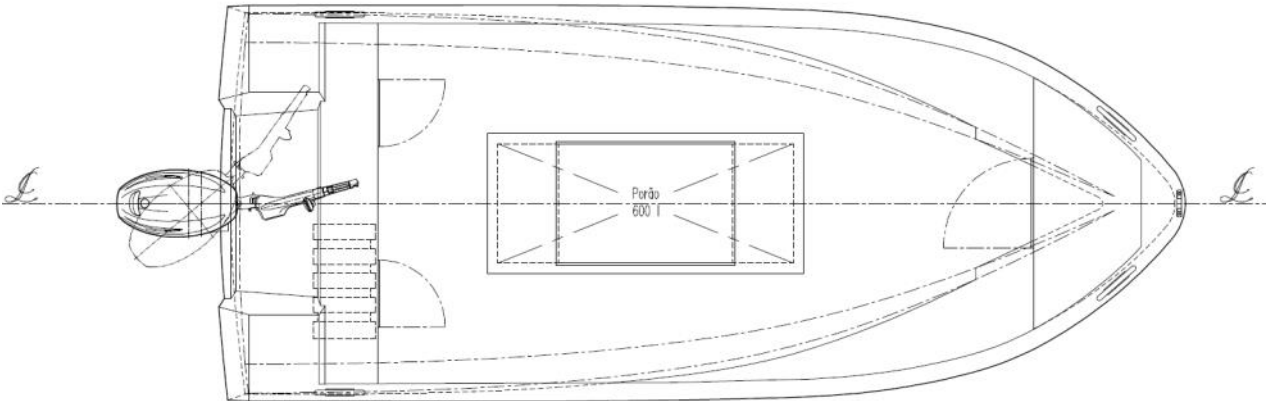
CARGO

FISH HOLD: 400Kg

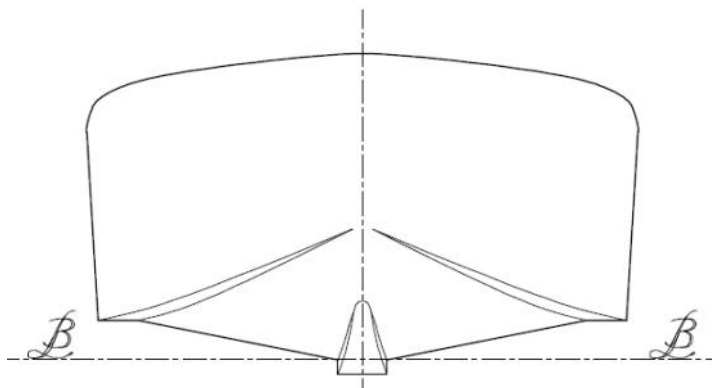
PROFILE



MAIN DECK



FORWARD VIEW



Layout and equipment indicative.

Please contact info@enp.pt for more details.



Estaleiros Navais de Peniche S.A.

Molhe Leste
2520-620 Peniche

Tel: +351 262 780 420

www.enp.pt

Portugal

info@enp.pt

39.353282, -9.36773